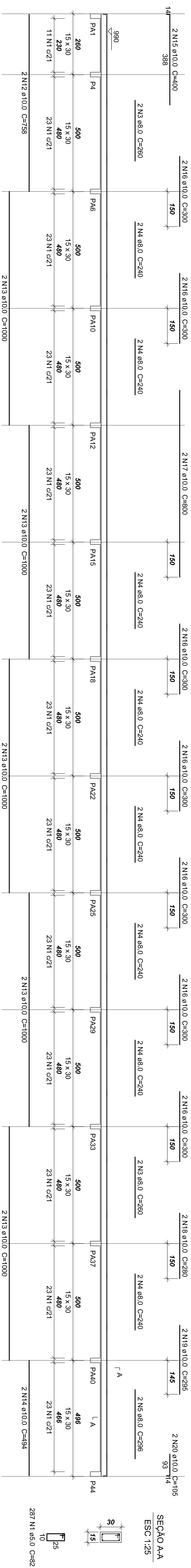


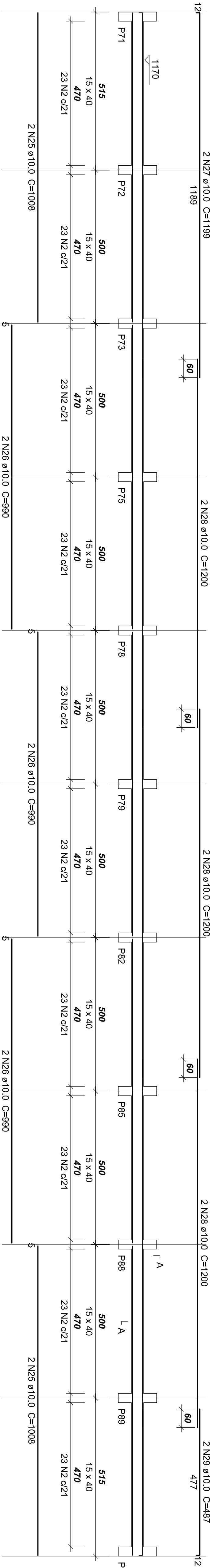
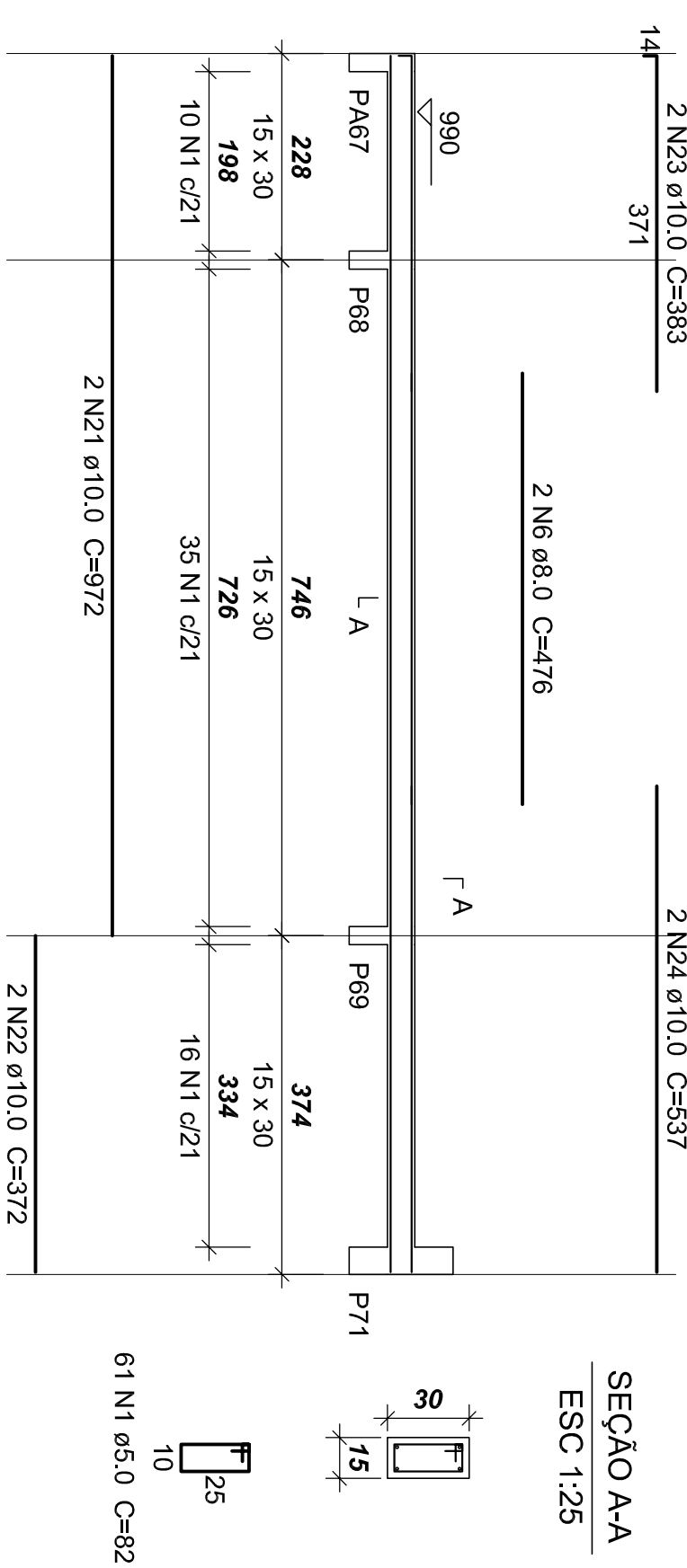
## V401 (15 x 30)

1:75



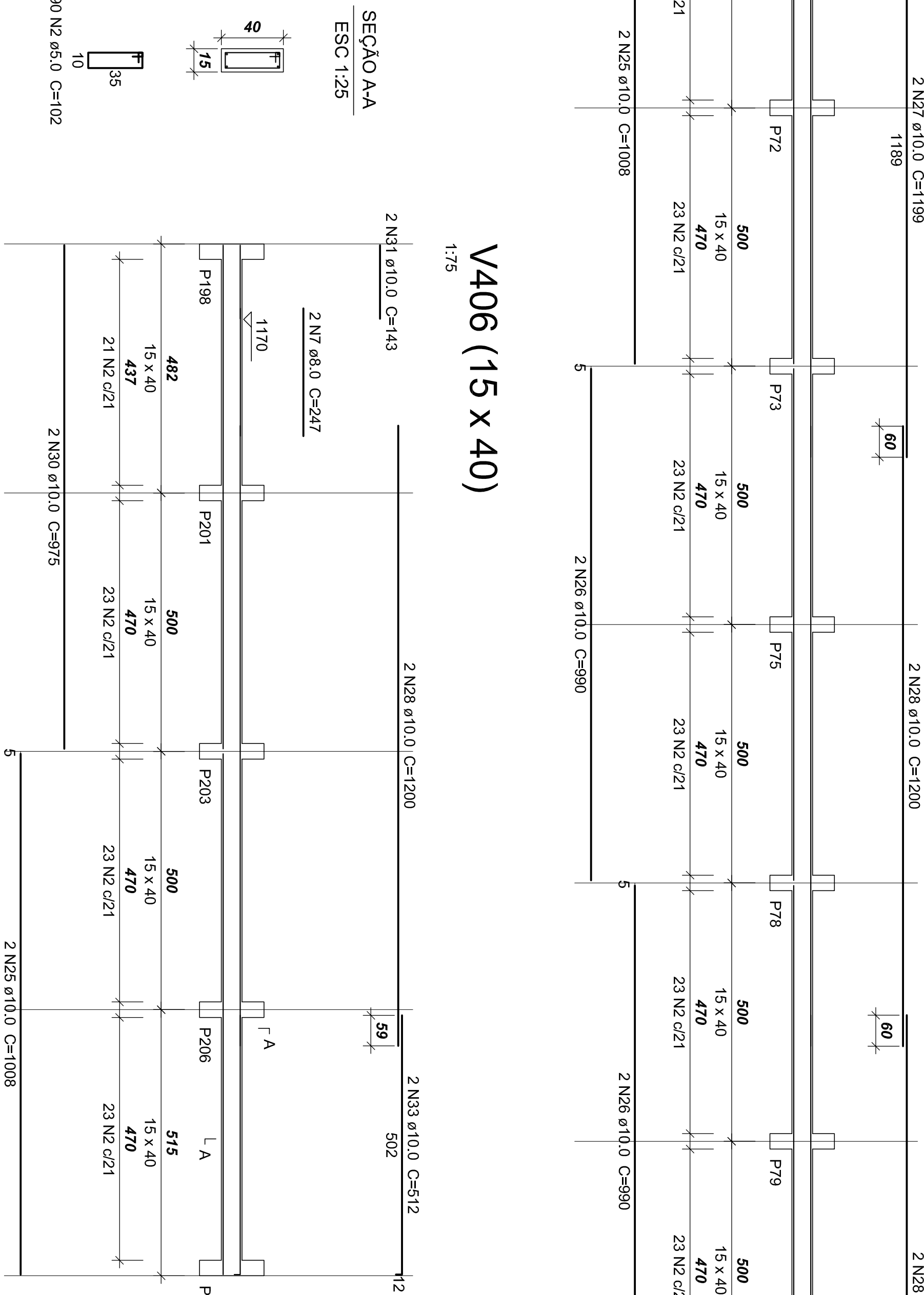
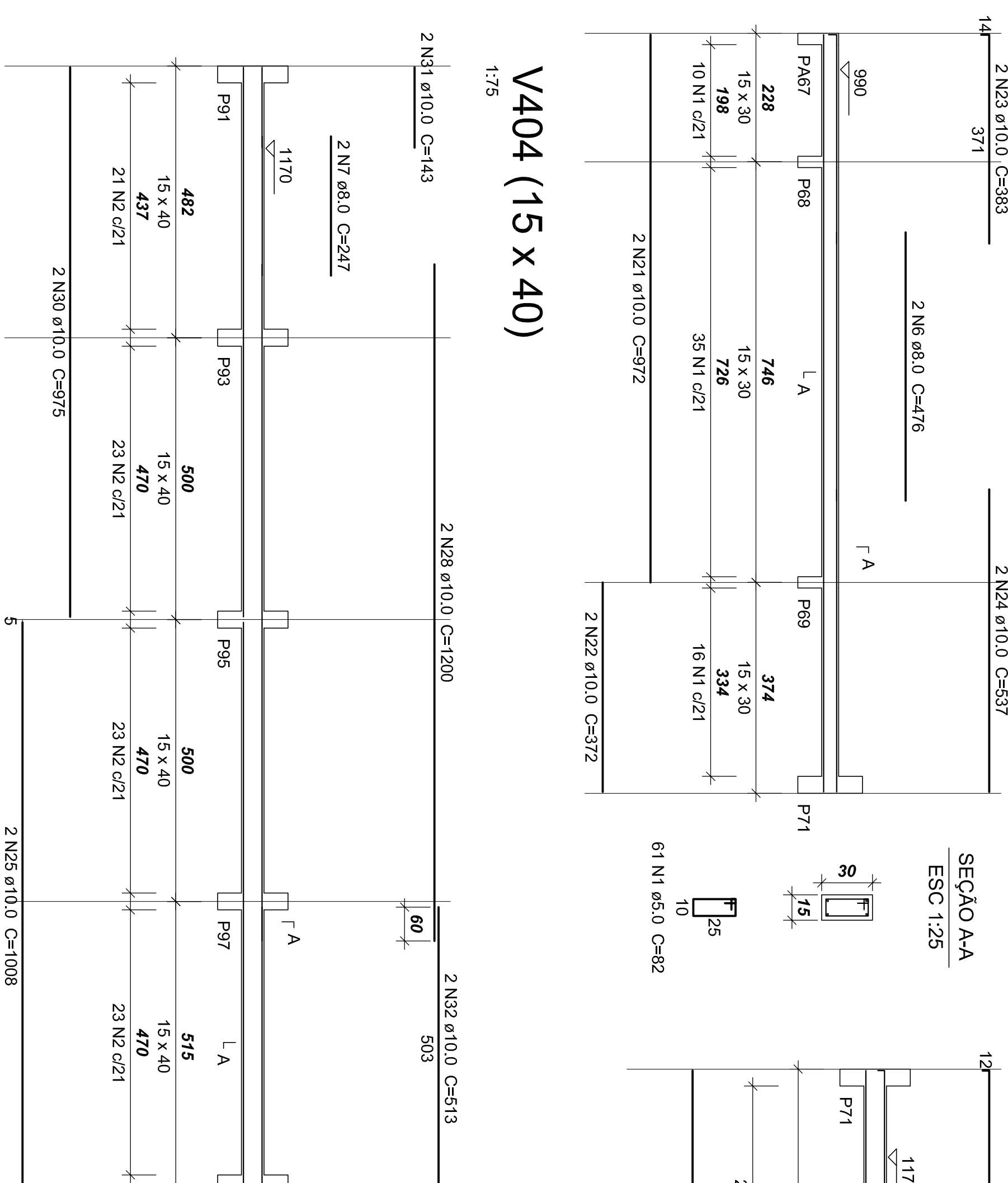
## V402 (15 x 30)

1:75

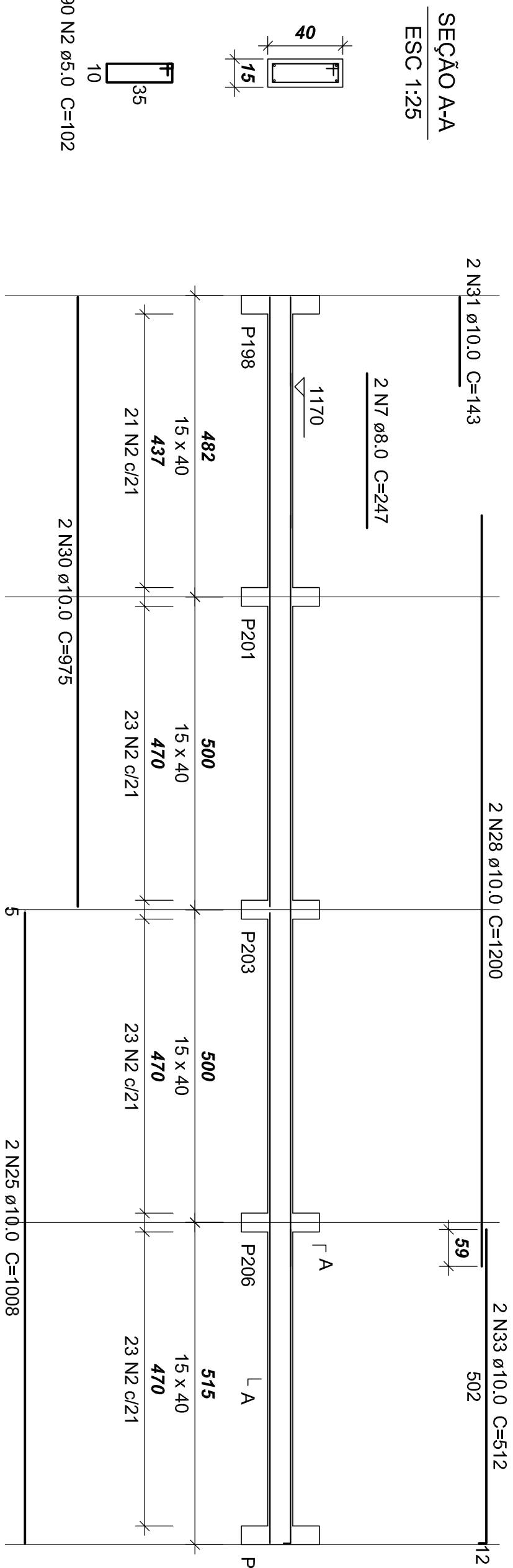
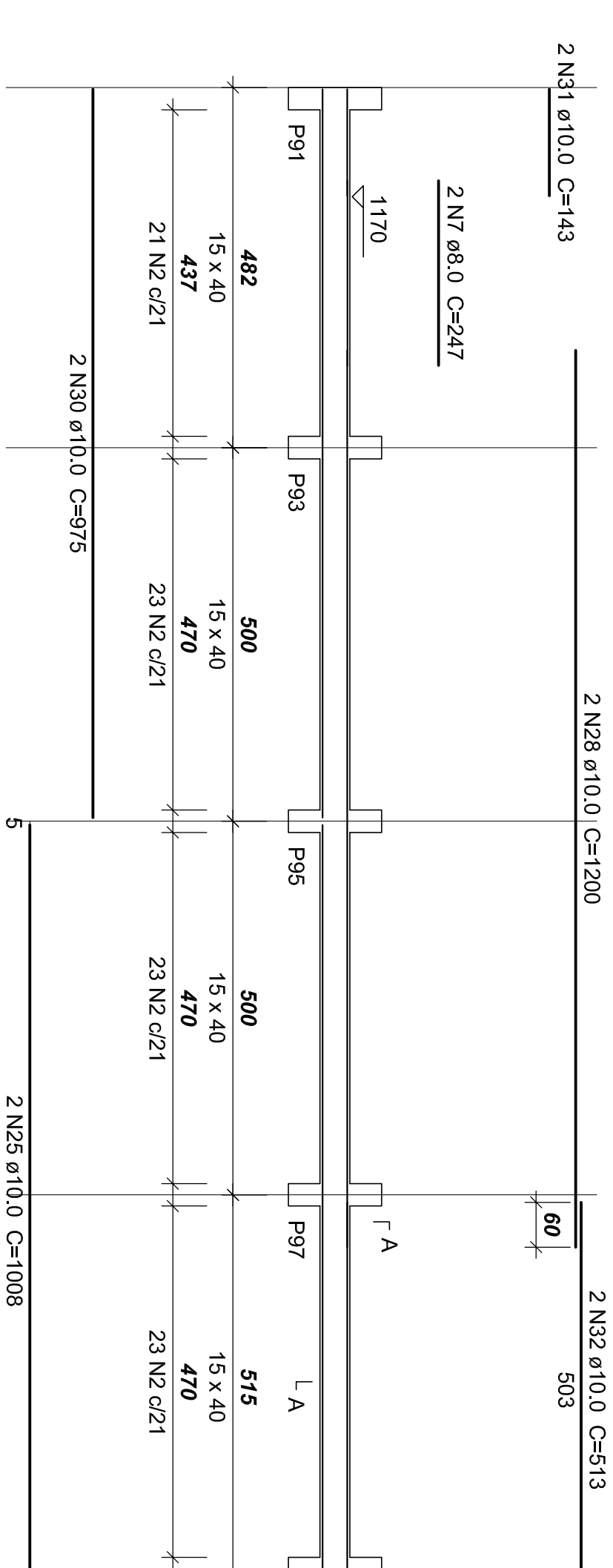


V403 (15 x 40)

1:75

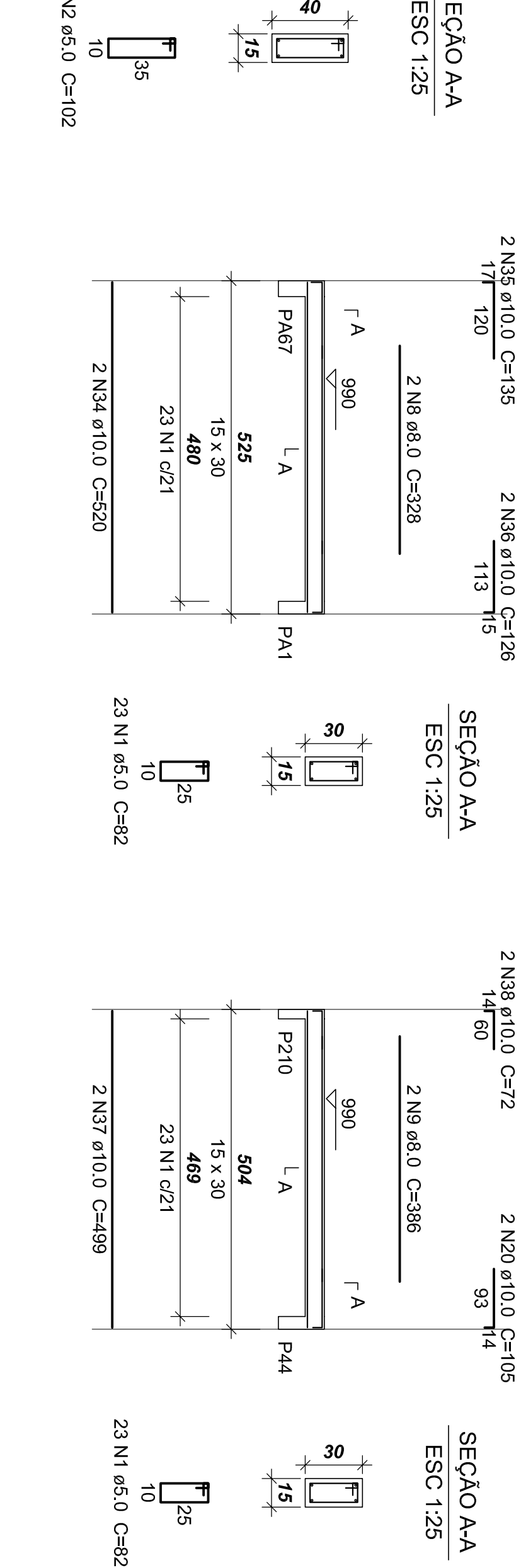
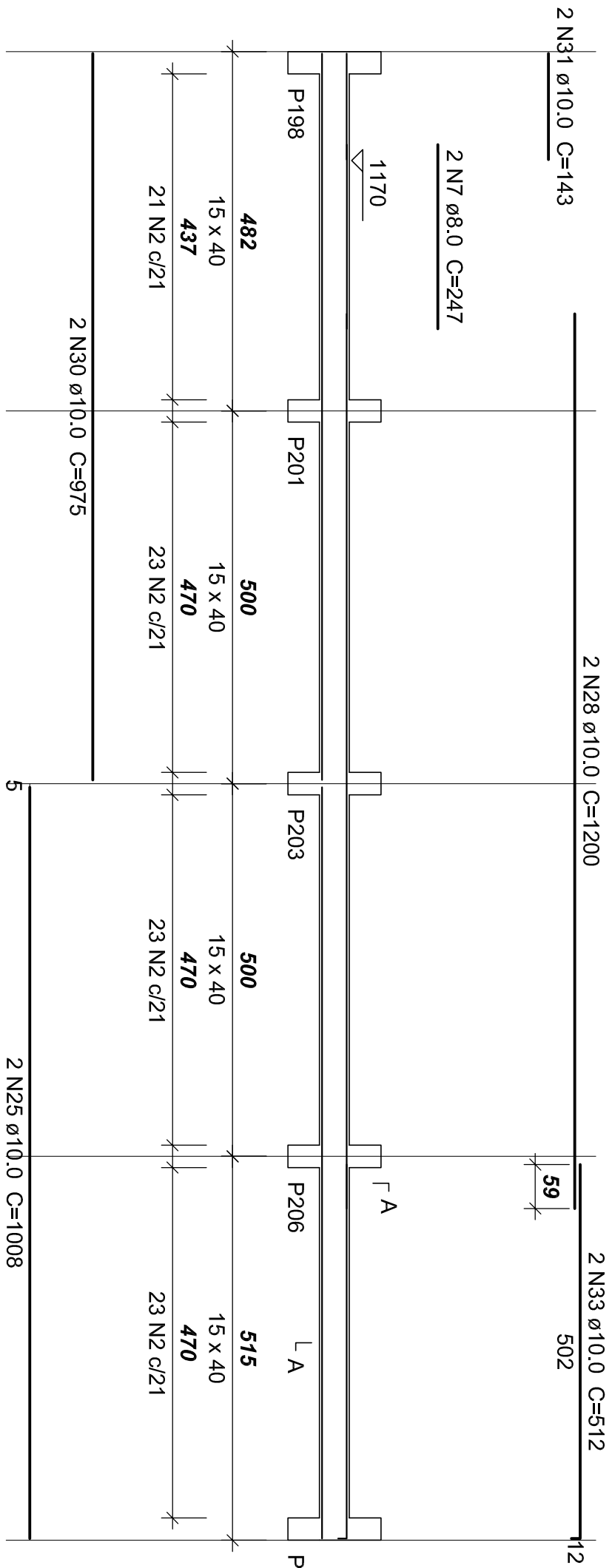


## V404 (15 x 40)



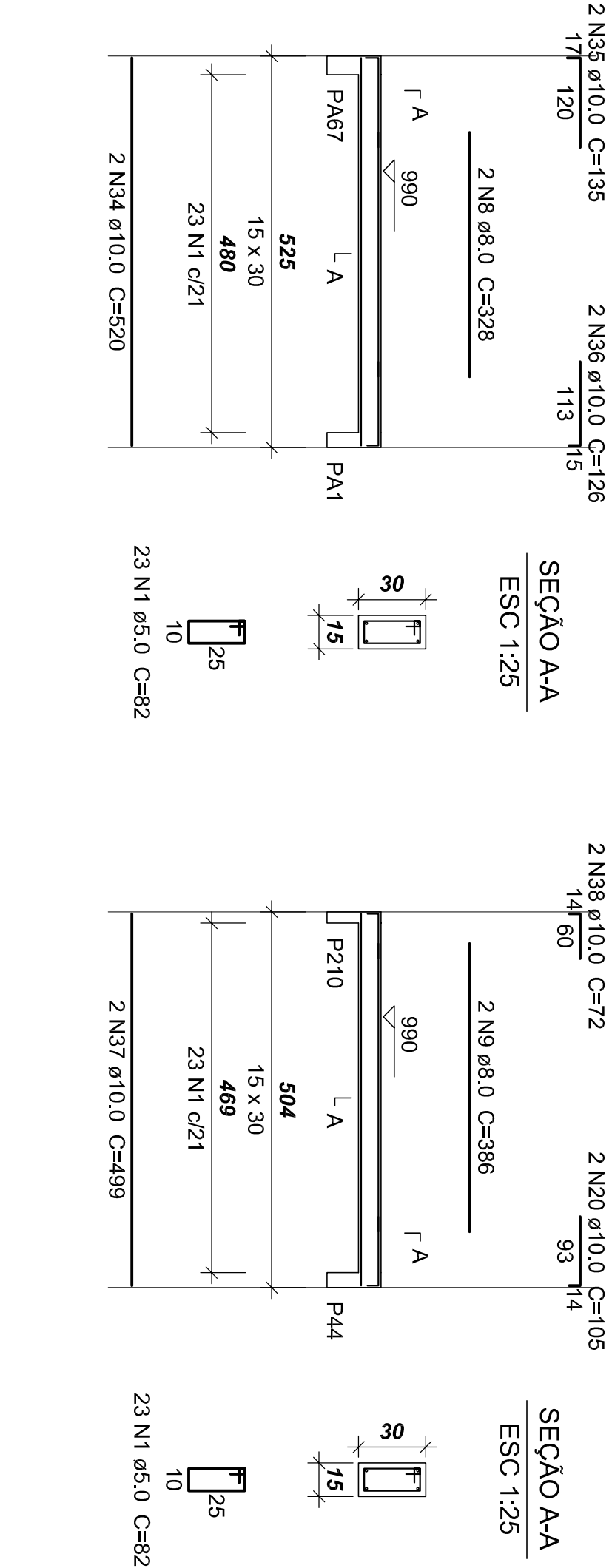
## V406 (15 x 40)

1:75



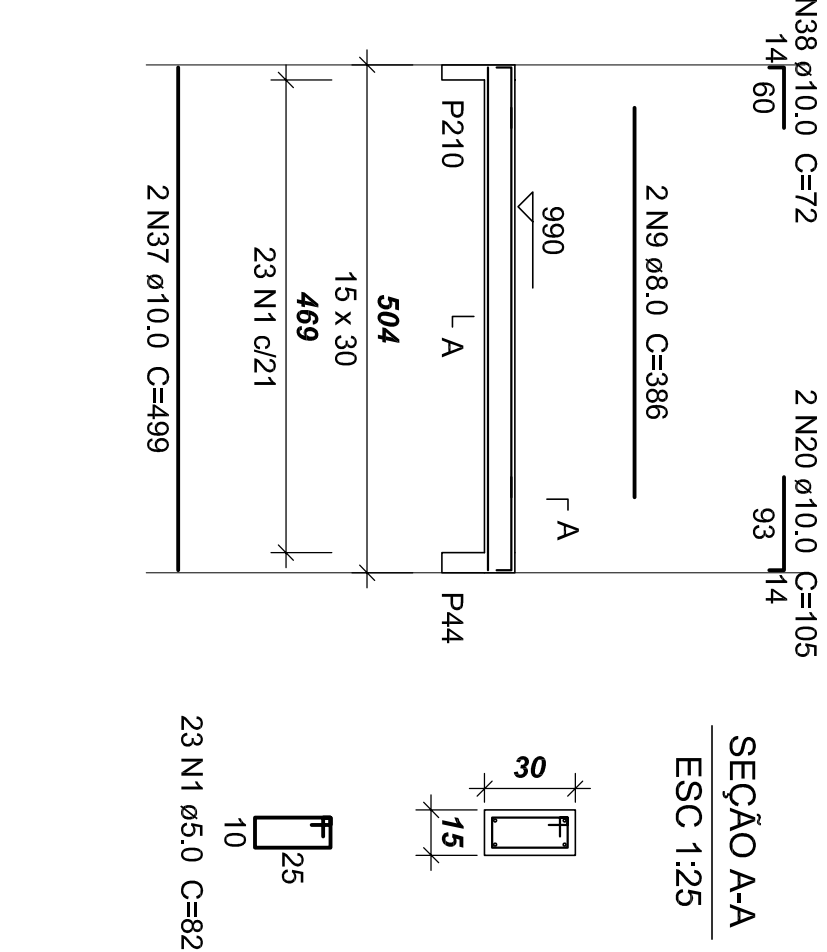
## V407 (15 x 30)

1:7



## V409 (15 x 30)

1:75



	ACO	N	DMM	Q	UNIT	C(TOTAL)
CA60	1	50	394	2	7446	
CA50	2	5.0	753	4	120	74466
	3	8.0	4	262	1040	1040
	4	8.0	16	240	3840	400
	5	8.0	2	298	592	592
	6	8.0	6	247	1482	1482
	7	8.0	6	247	1482	1482
	8	8.0	2	328	656	656
	9	8.0	2	386	772	772
	10	8.0	4	526	1050	1050
	11	8.0	4	526	1050	1050
	12	10.0	2	758	1516	1516
	13	10.0	10	1000	10000	10000
	14	10.0	2	444	968	968
	15	10.0	12	390	4200	4200
	16	10.0	12	390	4200	4200
	17	10.0	2	880	1600	1600
18	10.0	2	280	560	560	
19	10.0	2	296	590	590	
20	10.0	2	872	1644	1644	
21	10.0	2	872	1644	1644	
22	10.0	2	372	744	744	
23	10.0	2	333	766	766	
24	10.0	2	537	1074	1074	
25	10.0	12	980	11880	11880	
26	10.0	12	980	11880	11880	
27	10.0	4	1199	4736	4736	
28	10.0	16	1200	19200	19200	
29	10.0	4	975	3904	3904	
30	10.0	4	975	3904	3904	
31	10.0	4	143	572	572	
32	10.0	2	513	1026	1026	
33	10.0	2	512	1024	1024	
34	10.0	2	512	1024	1024	
35	10.0	2	158	270	270	
36	10.0	2	128	252	252	
37	10.0	2	499	998	998	
38	10.0	2	72	144	144	
39	10.0	2	1035	2070	2070	
40	10.0	2	1035	2070	2070	
41	10.0	2	1059	2100	2100	
42	10.0	2	266	406	406	
43	10.0	2	266	406	406	
44	10.0	2	266	406	406	
45	10.0	2	136	413	413	
46	10.0	2	1	208	1	

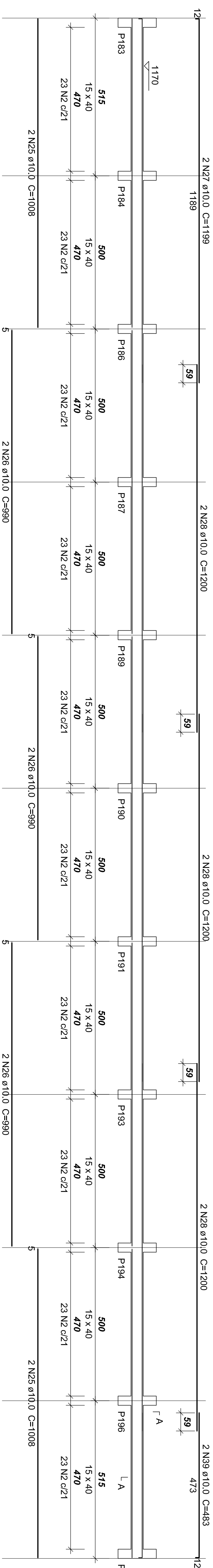
QO	DIAM	C.TOTAL (m)	PESO (kg)
CA50	8.0	108.4	42.8
CA60	10.0	911.6	562
	5.0	1070.8	165
PESO TOTAL			
CA50	804.8		
CA60	165		

Vol. de concreto total (C-30) = 13.58 m<sup>3</sup>  
Área de forma total = 218.21 m<sup>2</sup>

Área de forma total = 218.21 m<sup>2</sup>

V405 (15 x 40)

1:75



V408 (15 x 40)

